



Play, Learn & Grow Together

Llangyfelach Primary School
Pengors Road, Llangyfelach, Swansea SA5 7JE

Headteacher: Mr Lee Burnell
Deputy Headteacher: Mrs C J Bate

☎: 01792 771497

✉: Llangyfelach.primary@swansea-edunet.gov.uk
www.llangyfelachprimaryschool.co.uk/

SIP 1	SIP 2	SIP 3	SIP 4
Enhance the quality of learner reflection and response to others.	Improving opportunities for learners to experience a more diverse and creative curriculum.	Provide real life learning experiences that are enriched using outdoor spaces, locally and wider.	Improve wellbeing provision for all within our community.

April Newsletter 2026

Please read the following information, which highlights current information, routines, procedures and developments.

Forest School Sessions @ LPS

Forest School is a child-centred inspirational learning process, that offers opportunities for holistic growth through regular sessions, and in all weathers and seasons. It develops confidence and self-esteem through learner inspired, hands-on experiences in a natural setting. Starting this term we are looking forward to working closely with Llangyfelach Scout Hut, using their site to start Forest School sessions for all pupils from Y1-6.

Clothing

To ensure that the children are sufficiently protected from the weather and the outdoor environment, we require children to wear appropriate clothing and footwear. Clothing will get dirty so old clothes are required. Forest School sessions will take place in **all weathers** unless the safety of the participants is in question, due to high winds or icy ground.

The general rule is to wear lots of layers which keep in the heat and can be removed if needed. All children should come to school dressed appropriately for their Forest School session wearing suitable clothing:

- Long sleeved t-shirt, even in warm weather to help protect against bites, stings and scratches.
- Trousers will be worn to reduce the risk of bites, stings and scratches.
- Waterproof over trousers or dungarees and a waterproof jacket (really important when wet to prevent under clothing getting wet/damp).
- Long socks, wellies, walking boots or old trainers
- During the summer, a sunhat and sunscreen
- During the colder months, extra layers such as a fleece, leggings, tights, hats and gloves etc are required.

Toileting

We will ask the children to use the toilet before leaving the setting, however toilets are available on site along with hand washing facilities.

Forest Schools Timetable:

Sessions will start on Tuesday 21st April, from Week 2 of the timetable below with our Y5 class. Sessions will continue through to the summer term on a fortnightly basis. Sessions will



run after lunch, led by a Forest School Leader, and we will return to school before the end of the school day. Children are to come to school dressed in their Forest School clothing on their allocated days - see below. **However, during the first week of May, Forest School sessions will be paused due to national testing.**

LPS Forest School Timetable			
	Tuesday	Wednesday	Thursday
Week 1	Year 1	Year 3	Year 2
Week 2	Year 5	Year 4	Year 6

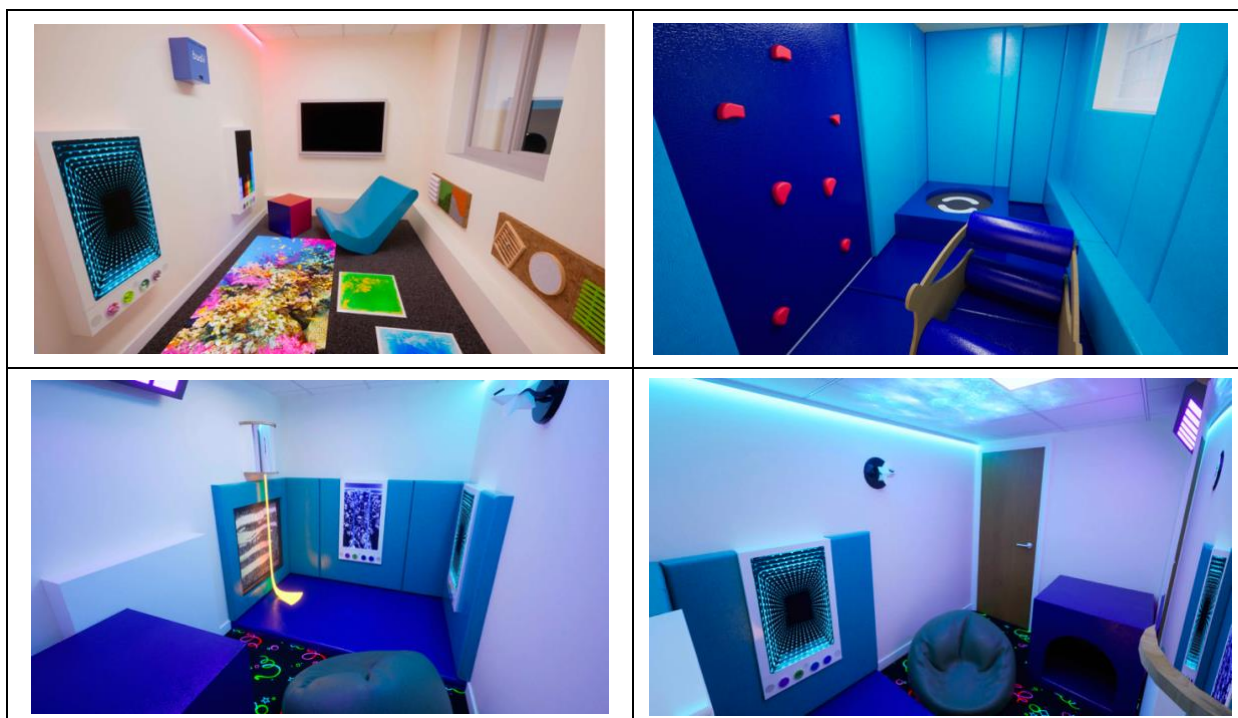
For further details on our Forest School policy and progression model, follow this link: <https://www.llangyfelachprimaryschool.co.uk/lps-forest-school/>

New LPS Sensory Rooms

We are extremely proud to announce that we will soon have 3 new Sensory Room provisions at LPS. These plans have been in the works for some time and finally are now becoming a reality. We are very excited to unveil these wonderful rooms for our learners and community in the very near future. Work is already underway, so these rooms will be ready for use this side of the summer break.

This provision will consist of 3 separate rooms with specific purposes:

1. **Engagement Room:** Alternative provision with multisensory and tactile activities, offering experiences that are linked to specific needs.
2. **Regulation Room:** Padded, low-stimulation environment, designed to help individuals self-soothe, reduce anxiety, and to regulate emotions.
3. **Sensory Room:** Provides Early Years learners with a multisensory and calming environment that will support their learning and self-regulation.



Our contractors, Findel and Rhino, are equally as excited as we are to open these rooms for our learners. They are offering to fund a full open evening to the local and wider community on a date that is yet to be decided. However, as soon as this is confirmed, we will let you know. It would be great to have a strong compliment of attendance for this event.

Especially since we are expecting many visitors from schools and the LA, coupled with the fact that Findel are providing food and drink. 😊

New Kitchen @ LPS

We are delighted to inform you that the Local Authority will be upgrading our school kitchen this term. This plan of works has been in the pipeline for some time, and we are finally at the stage where they will begin works starting Monday 27th April 2026. This will obviously affect the delivery of school dinners for the staff and children over the next 5-8 weeks, so please bear with us throughout this period.

Food will be transported in from a kitchen in a neighbouring school every day, so there will be no cessation of school dinner throughout the renovation period.

The outcome will most definitely be worth it, as LPS will have a modern and the very best kitchen in the LA stock, which will be very positive for everyone at LPS.

New Wraparound Booking System

We are excited to announce that we will be introducing a brand new booking system for our Wraparound service over the next few weeks. iPal provides a seamless and intuitive experience for parents by offering a simple, user-friendly booking interface with your own personal dashboard. The dashboard will give you 24/7 access to make bookings and manage sessions with instant confirmation and clear visibility of your bookings. You will also have a full record of all payments made and any amounts owing.

We will shortly email out a guidance pack with instructions on how to register and set up your account.

Further communication will follow to inform you of the go live date. ***Please note that after the go live date, you will be unable to book Wraparound if you have not registered your child.***



Urgent Health & Safety Message:

There are a number of parents parking in the bus bay outside of our school and on the Zig-Zag lines. Please refrain from doing so, as this is resulting in our pupil transport buses having to park elsewhere and in unsafe zones. This bus bay is for authorised school transport only and not cars or even taxis that are not linked to the Local Authority transportation scheme.

We have requested our PCSO and a Civil Parking Enforcement Officers to randomly attend the site from this week to monitor the situation and ensure that Pengors Road is safe and that our school can be safely accessed by all.

Next Year 6 Residential Trip to Borfa House:

Our next Year 6 class will be attending their residential trip in September 2026. We really hope they have an amazing time. They will have so many memories, stories and new skills to take away from this fantastic experience. Their days are filled with activities and challenges; they will sleep well when they return!

Yr 6 will be attending Borfa House from Monday 14th to 18th September 2026

To view what Borfa House has to offer please visit the following link:

<http://www.goveractivitycentres.co.uk/our-centres/borfa-house-port-eynon-bay/>

We know you will all have a wonderful time on your residential trips.

Payment for this residential trip will appear in your iPay account shortly.

School Trips:

As you are fully aware, the costs of school trips are becoming more expensive due to increased venue costs and bus hire. We state on our trip letters and communications that



your payments are contributions only and that the school will therefore cover any shortfall. However, due to increased costs at school level we are not always able to cover costs. Therefore, if there are not enough contributions paid for school trips, this may result in the trip not going ahead, which would be unfortunate.

As it stands most classes go on a trip nearly every term. To help alleviate these costs for all, moving forward we are considering only having one trip per class, per year. Then in other terms have visitors to school for each class at a fraction of the price. This may well be the only way forward in the very near future as prices are set to rise even further again.

Many thanks for your support and understanding on this matter.

Punctuality & Late Door Monitoring:

As you may be aware all schools work closely in conjunction with the Education Welfare Service in order to monitor pupils' punctuality and attendance. Our Education Welfare Officer regularly undertakes a register check in order to monitor who regularly arrives late on school premises in the mornings. **Throughout this term our EWO will be present onsite sporadically to monitor the current situation and provide letters to parents who arrive late.** Arriving late not only disrupts the routine of the class but means that pupils also miss the all-important introduction to the first lesson of the day. Many thanks for your cooperation.

Attendance

Please continue to help us by ensuring your child attends school and that you bring your child to school on time (before 9am). Regular school attendance is vital and missing school can have a significant impact on achievement over a one-year period as illustrated in the table below:

96 – 100% Attendance	Best chance of success	Your child is taking full advantage of every learning opportunity.
90 – 95% Attendance	At least 2 weeks of learning missed	Satisfactory. Your child may have to spend time catching up with work
85 – 90% Attendance	At least 4 weeks of learning missed	Your child is at risk of underachieving and may need extra support from you to catch up with work
80 – 85% Attendance	At least 5½ Weeks of learning missed	Your child's poor attendance has a significant impact on learning
Below 80% Attendance	At least 7½ weeks of learning missed	Your child is missing out on a broad and balanced education. You are at risk of prosecution.

2025-26 INSET Days:

1. ~~Monday 1st September~~
2. ~~Monday 3rd November~~
3. ~~Tuesday 4th November~~
4. ~~Monday 5th January~~
5. ~~Monday 13th April~~
6. ~~Monday 20th July~~

These dates are subject to change; however, we will aim to notify you of any alterations at least 1 month prior to the rearranged date. Many thanks for your cooperation on this matter.

Swansea Term & Holidays 2025-26:

Term	Term begins	Mid-term holiday begins	Mid-term holiday ends	Terms ends
Autumn 2025	Monday 1 September 2025	Monday 27 October 2025	Friday 31 October 2025	Friday 19 December 2025
Spring 2026	Monday 5 January 2026	Monday 16 February 2026	Friday 20 February 2026	Friday 27 March 2026
Summer 2026	Monday 13 April 2026	Monday 25 May 2026	Friday 29 May 2026	Monday 20 July 2026

Swansea Term & Holidays 2026-27:

Term	Term begins	Mid-term holiday begins	Mid-term holiday ends	Terms ends
Autumn 2026	Tuesday 1 September 2026	Monday 26 October 2026	Friday 30 October 2026	Friday 18 December 2026
Spring 2027	Monday 4 January 2027	Monday 8 February 2027	Friday 12 February 2027	Friday 19 March 2027
Summer 2027	Monday 5 April 2027	Monday 31 May 2027	Friday 04 June 2027	Tuesday 20 July 2027

LPS School Improvement Plan 2025-26:

Throughout periods of the previous academic year, the Pupil Voice Groups, AoLE Leaders, Linked Governors and SLT undertook our LPS Self-Review processes. To glean further information on our robust self-review systems that enable us to monitor & evaluate progress on whole school targets, please visit the following webpage:

<https://www.llangyfelachprimaryschool.co.uk/lps-self-review-systems/>

The outcome from our LPS Self-Review systems formulated the following agreed set of Whole School Targets for 2025-26:

1. Enhance the quality of learner reflection and response to others.
2. Improving opportunities for learners to experience a more diverse and creative curriculum.
3. Provide real life learning experiences that are enriched using outdoor spaces, locally and wider.
4. Improve wellbeing provision for all within our community.

To view our full School Improvement Plan (SIP) for this 2025-26 SIP Document please visit the webpage: <https://www.llangyfelachprimaryschool.co.uk/sip-2025-26/>

Finally:

I would like to thank you all for your incomparable support and commitment toward making LPS the best it can be for all. Our pupils are a credit to the school and to you. Please do not hesitate to contact me at any time if you have a query or concern. You can use the email address provided at the top of this letter; I endeavour to respond to all emails within the same day.

All best to all,
Lee Burnell
Headteacher

The LPS Curriculum & Learning Projects

Nursery:

1. Welcome to LPS
2. Once upon a time...
3. Minibeasts at LPS
4. Barnaby Bear at Swansea Bay
5. LPS Flower Show

Reception:

1. Play, Learn, Hatch and Grow
2. LPS Spring Festival
3. Rockpool Raiders
4. LPS Flower Show

Year 1:

1. LPS Happy Healthy Helpers
2. Amazing Astronauts
3. LPS and Brynteg Farm
4. The LPS Summer Festival

Year 2:

1. LPS and The Penllergare Trust
2. The Roman Invasion
3. Swansea Bay
4. LPS Scented Stall (Lush)

Year 3:

1. Fantasia
2. Sweyns-ey
3. Swansea Market
4. LPS Market

Year 4:

1. The River Ilston Disaster
2. Wales, Wars and Weddings
3. LPS Fitness Fanatics
4. LPS Healthy Snack Bar

Year 5:

1. Copperopolis
2. Abertawe Egyptology
3. Cymru Constellations
4. LPS Farmers Market

Year 6:

1. Wales at War
2. The Origin of the Species
3. Creative Cymru
4. LPS Art Gallery

For more information regarding our new LPS Curriculum, Training Systems, Assessment and Progression Models please visit the following link:

<https://www.llangyfelachprimaryschool.co.uk/lps-curriculum-teaching-learning/>



Key Information Links @LPS

Information Focus	Information Link
LPS Vision & Values	https://www.llangyfelachprimaryschool.co.uk/vision-and-values/
Self-Evaluation Report	https://www.llangyfelachprimaryschool.co.uk/lps-self-evaluation-report/
School Improvement Plan	https://www.llangyfelachprimaryschool.co.uk/lps-school-improvement-plan/
Welsh Government Grant Plans	https://www.llangyfelachprimaryschool.co.uk/welsh-government-grant-expenditure-plans/
LPS Prospectus	https://www.llangyfelachprimaryschool.co.uk/prospectus-1/
LPS Annual Report	https://www.llangyfelachprimaryschool.co.uk/governing-body/
Staffing Roles & Responsibilities	https://www.llangyfelachprimaryschool.co.uk/meet-the-staff/
LPS Safeguarding	https://www.llangyfelachprimaryschool.co.uk/lps-safeguarding/
LPS Teaching & Learning	https://www.llangyfelachprimaryschool.co.uk/lps-curriculum-teaching-learning/
Curriculum Developments	https://www.llangyfelachprimaryschool.co.uk/topic/areas-of-learning
Learning Experiences & Visits	https://www.llangyfelachprimaryschool.co.uk/class-pages/
LPS Transition Plans	https://www.llangyfelachprimaryschool.co.uk/transition-1/
LPS Policy	https://www.llangyfelachprimaryschool.co.uk/lps-policies/
LPS Calendar	https://www.llangyfelachprimaryschool.co.uk/diary/grid/
LPS Wraparound Service	https://www.llangyfelachprimaryschool.co.uk/topic/lps-wraparound
LPS PTFA	https://www.llangyfelachprimaryschool.co.uk/ptfa-1/
LPS News & Events	https://www.llangyfelachprimaryschool.co.uk/topic/news-and-events
LPS Attendance	https://www.llangyfelachprimaryschool.co.uk/attendance/